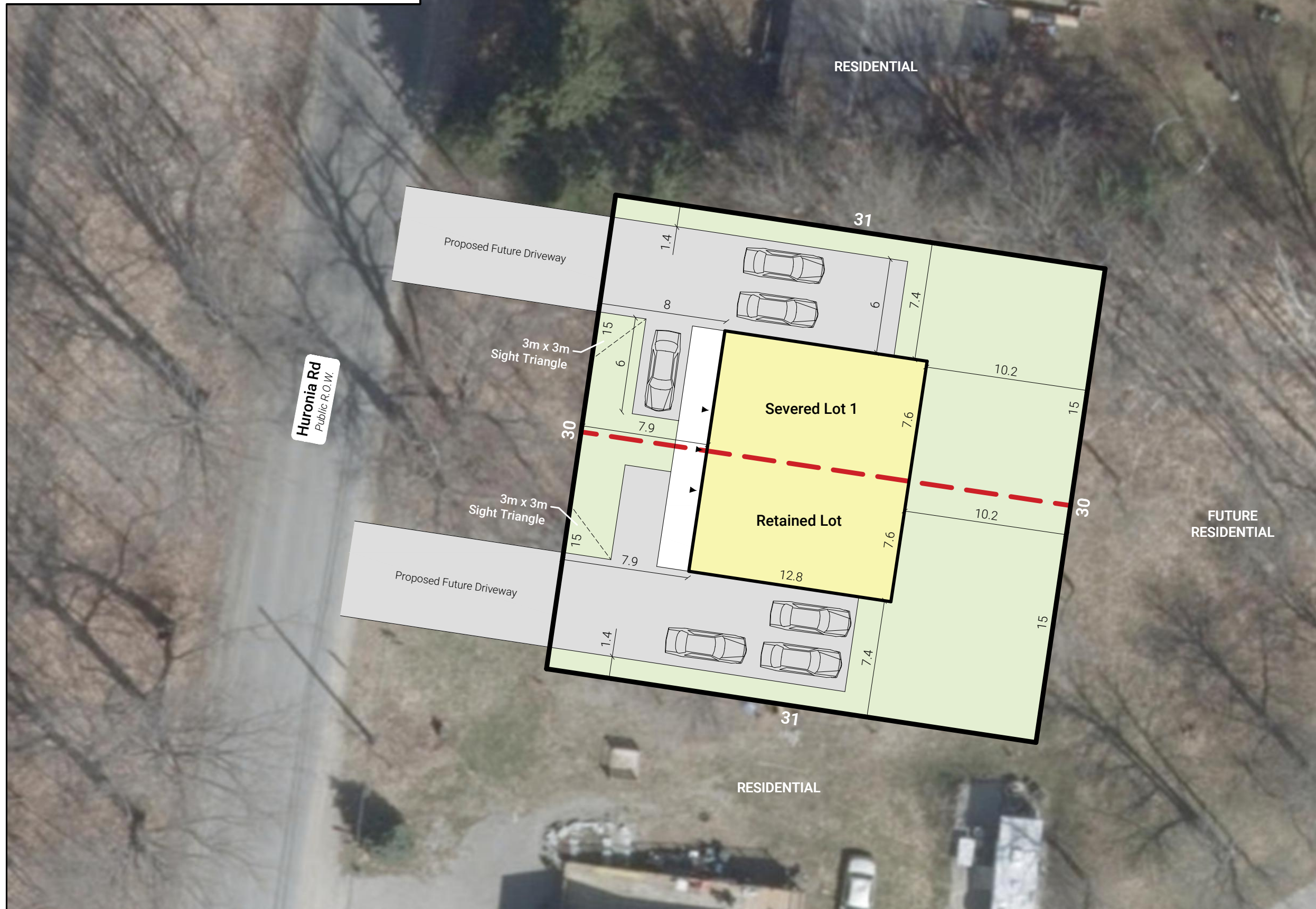


Zone Matrix
ZBL 2014-44

	Residential One (R1) Zone Semi Detached	Severed Lot 1	Retained Lot
Lot Area (min)	300m ² per unit	±465.0m ²	±465.0m ²
Lot Frontage (min)	7.5m per unit	±15.0m	±15.0m



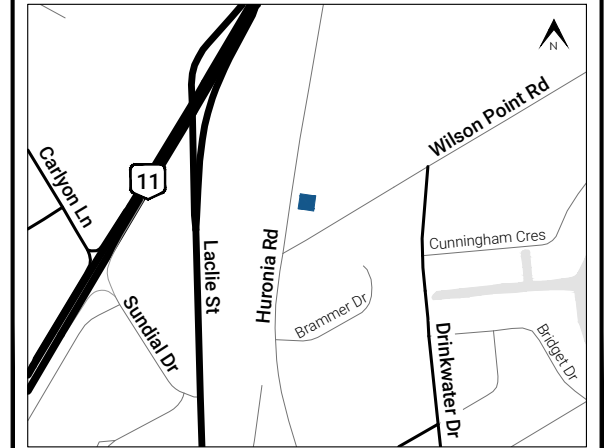
SEVERANCE SKETCH

4383 Huronia Road

Roll Number 435204041515702

Part of Lot 3, Concession 6 Southern Division


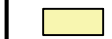
City of Orillia, County of Simcoe



Subject Lands

Scale 1 : 15,000

LEGEND

-  Subject Lands
Lot Area: ±930.0m² (0.23ac)
Lot Frontage: ±30.0m
-  Semi-Detached Dwelling (Future)



Scale: 1 : 250



Note: This drawing is for discussion purposes only.

Source: Plan 51R-43728, C.T. Strongman Surveying Ltd, August 8, 2022. County of Simcoe interactive map.

Drawn By: A.M. Date: August 11, 2025 File No: 1495

MORGAN
PLANNING & DEVELOPMENT

Phone: (705) 327-1873 Website: morganplanning.ca
101-21 Matchedash Street South, Orillia, ON, L3V 4W4