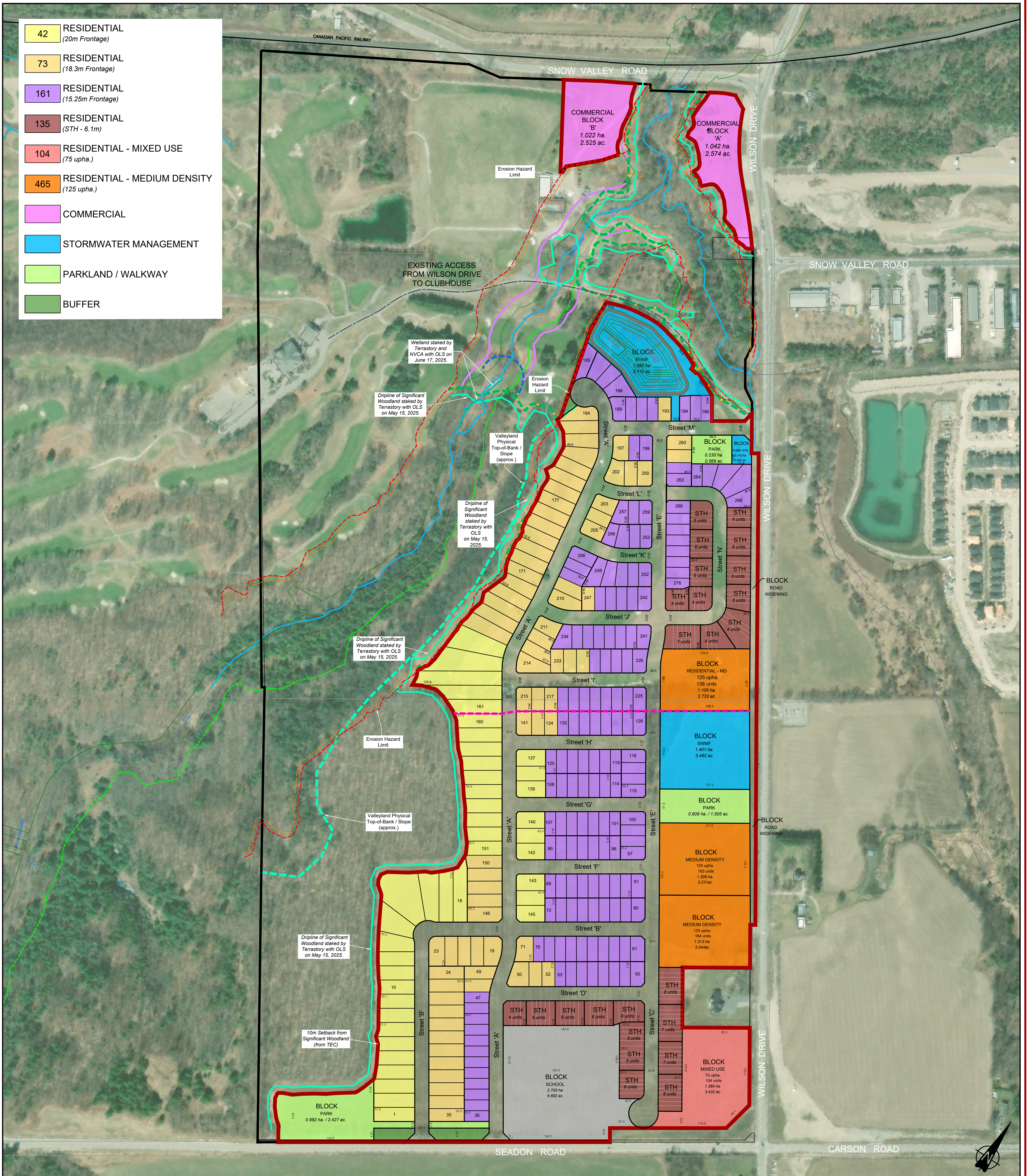


- 42 RESIDENTIAL
(20m Frontage)
- 73 RESIDENTIAL
(18.3m Frontage)
- 161 RESIDENTIAL
(15.25m Frontage)
- 135 RESIDENTIAL
(STH - 6.1m)
- 104 RESIDENTIAL - MIXED USE
(75 upha.)
- 465 RESIDENTIAL - MEDIUM DENSITY
(125 upha.)
- COMMERCIAL
- STORMWATER MANAGEMENT
- PARKLAND / WALKWAY
- BUFFER



- SUBJECT SITE
(103.745 ha. / 256.36 ac.)
- EROSION HAZARD LIMIT
(From Tatham's)
- TOB OF COLDWATER WATERSHED
(From TEC)
- DRIPLINE OF SIGNIFICANT WOODLAND
(From TEC)
- LANDS SUBJECT TO APPLICATION
(48.866 ha. / 120.750 ac.)
- STABLE SLOPE LIMIT
(From Tatham's)
- WETLANDS + 30m
(From TEC)
- GREATEST SETBACK LIMIT
(From TEC)
- PHASE LINE BOUNDARY
- 6m ACCESS ALLOWANCE
(From Tatham's)
- SURFACE WATER DRAINAGE
(From TEC)

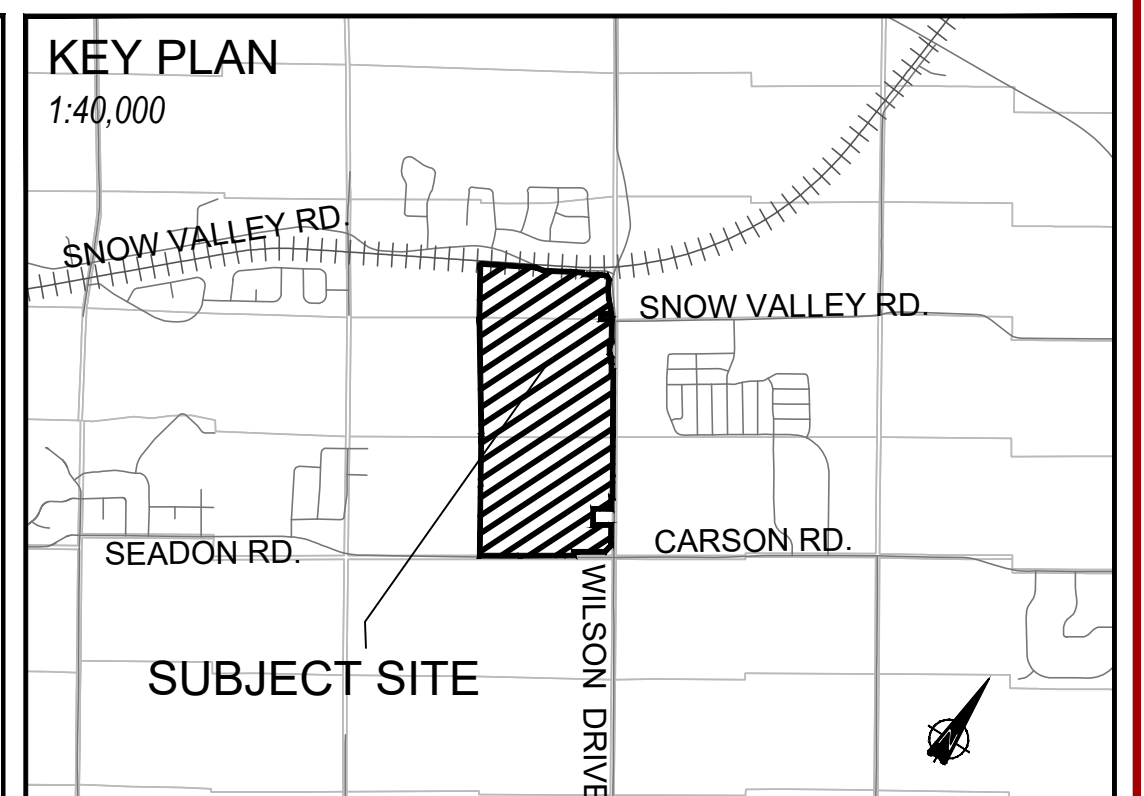
CONCEPTUAL DRAFT PLAN

980 units

PART OF THE EAST HALF OF LOT 13
AND PART OF THE EAST HALF OF LOT 14
AND PART OF THE EAST HALF OF LOT 15
CONCESSION 7

GEOGRAPHIC TOWNSHIP OF VESPRE
TOWNSHIP OF SPRINGWATER
COUNTY OF SIMCOE

**2842, 2636 & 2694 WILSON DRIVE
1643 SNOW VALLEY ROAD**



MORGAN
PLANNING & DEVELOPMENT
Phone: (705) 327-1873 Website: morganplanning.ca
101-21 Matchedash Street South, Orillia, ON, L3V 4W4

**For Discussion
Purposes Only
Feb 12, 2026**

Scale: 1:2500 metric (Arch D)

Drawn By: B.H.
Checked By: J.H.